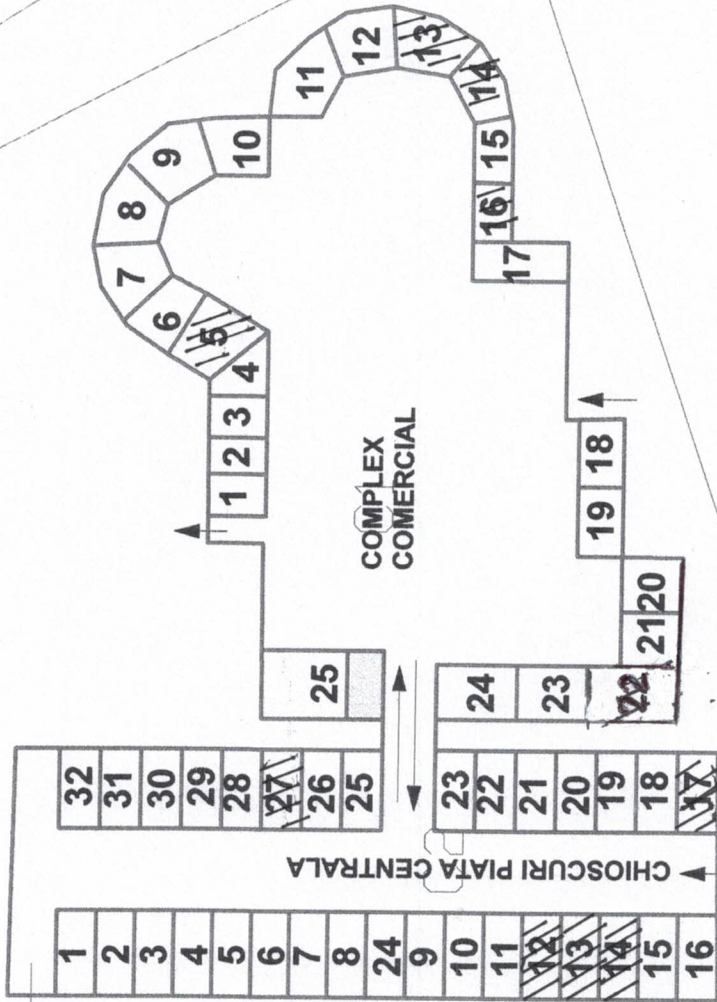
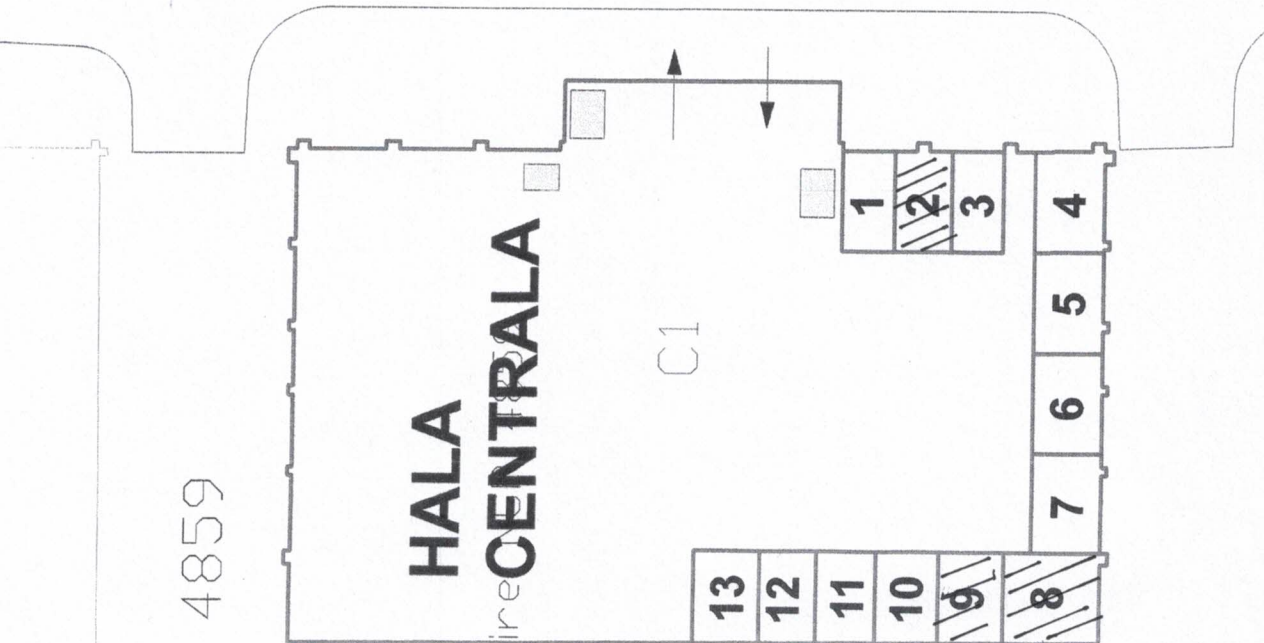
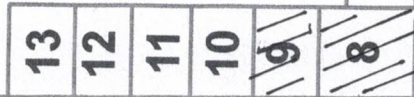


4859

HALA CENTRALA

Lipirea

C1



ANEXA A.1.

C1

4861

C1

2743

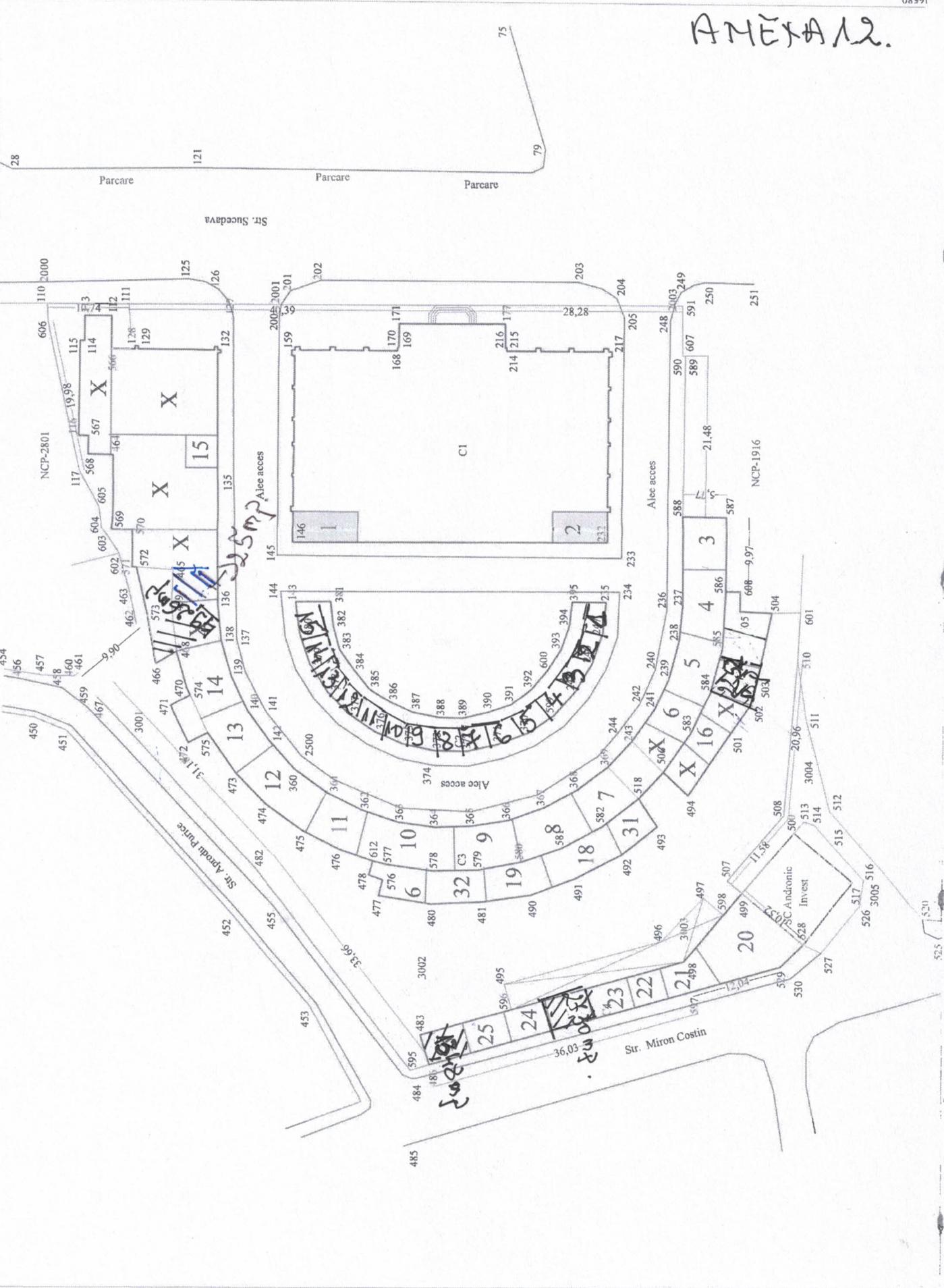
C1 4862

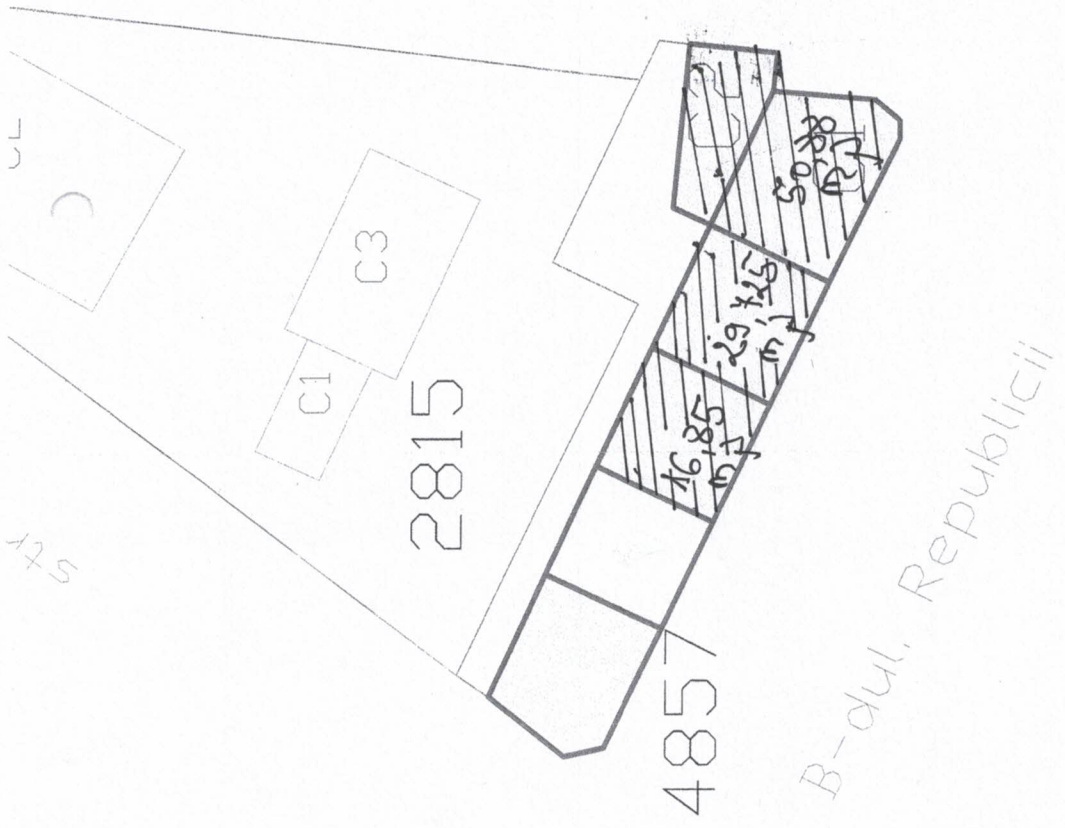
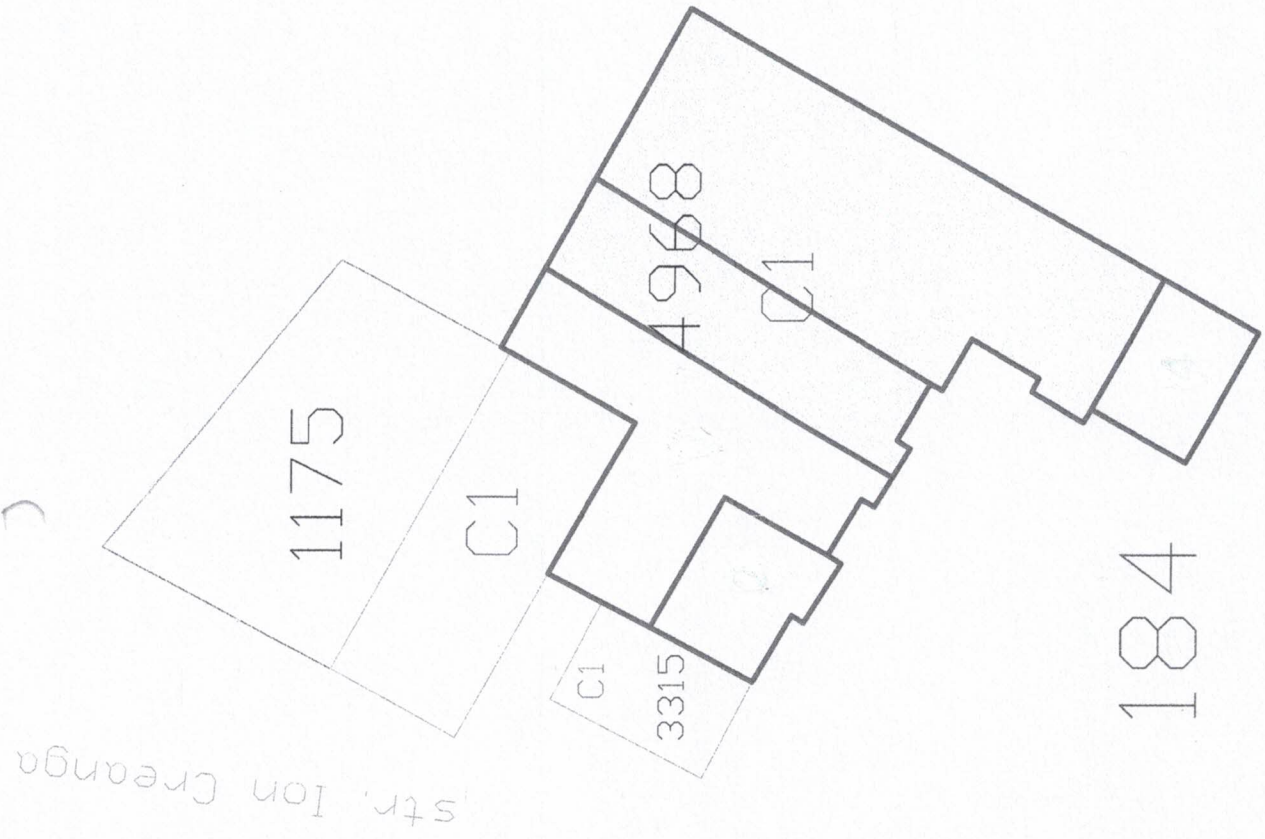
G

AMEXA 2.

604390

604390





2384

50126

B-dul

P

52485

C3

52485-actualizare-constr.NCP 1783

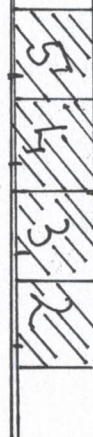
1783

C1

C2

C3

4849



acces

53869

actualizare-inscr.constr.
53869-actualizare-desf.constr. NCP 4848

C3 476/1

3476

C1

4850

Bloc 6

S = 432 mp.

102

fost NCP 102

C1
4450

4451

C1

4
1

12640/M

604320

604320

646520

646640



NCP-2743

AMTA 1.5

