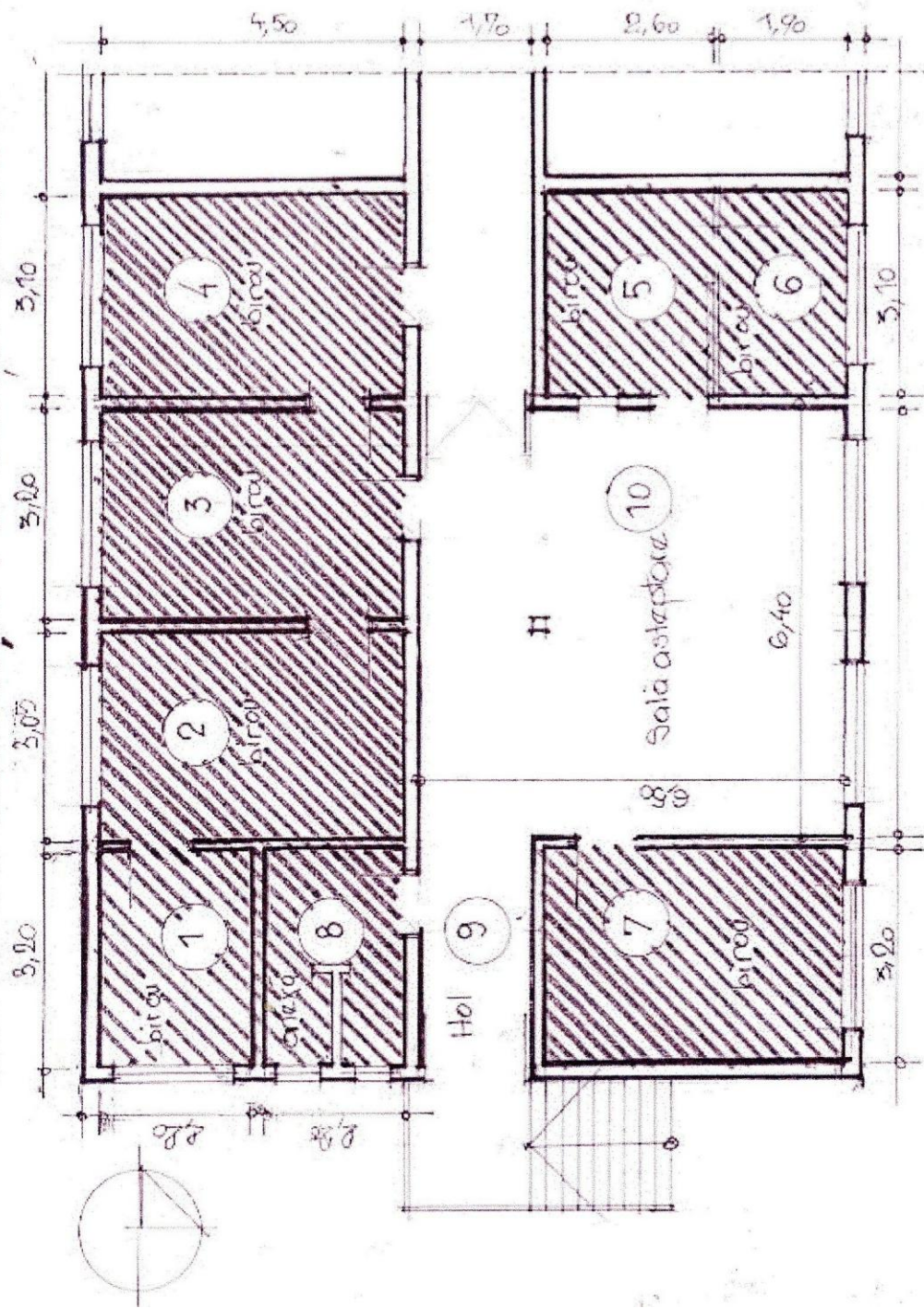


SERVICIUL EVIDENȚA POPULAȚIEI ROMAN

LEGENDĂ



- 1.b. 3,20 x 2,20 = 7,04 mp
- 2.b. 3,05 x 4,50 = 13,73 mp
- 3.b. 3,20 x 4,50 = 14,40 mp
- 4.b. 3,10 x 4,50 = 13,95 mp
- 5.b. 3,10 x 2,60 = 8,06 mp
- 6.b. 3,10 x 1,90 = 5,89 mp
- 7.b. 3,20 x 4,65 = 14,88 mp
- 8.a. 2,20 x 3,20 = 7,04 mp

TOTAL SU = 84 mp

- 9.h.a. 1,70 x 3,20 = 5,44 mp
- 10.s.a. 6,40 x 6,50 = 41,60 mp

TOTAL S.Comun = 47 mp

RELEVU SC. 1:100

1-8 Spațiu ce se va preda Primăriei Roman